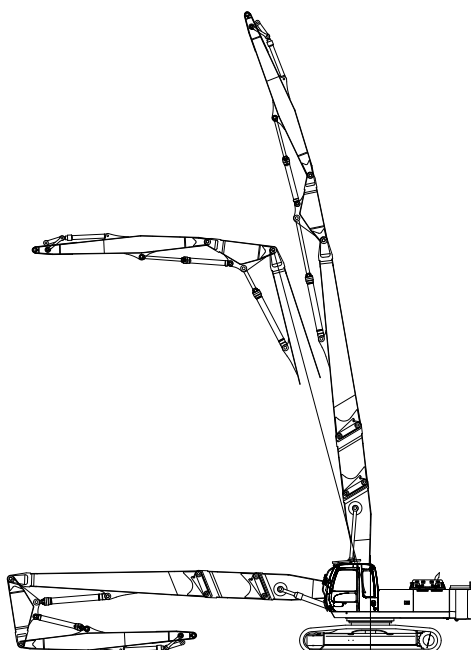


HITACHI ZAXIS350LCK SUPER LONG DEMOLITION

engine rated power
180 kW / 247 HP

operating weight
40 100 kg

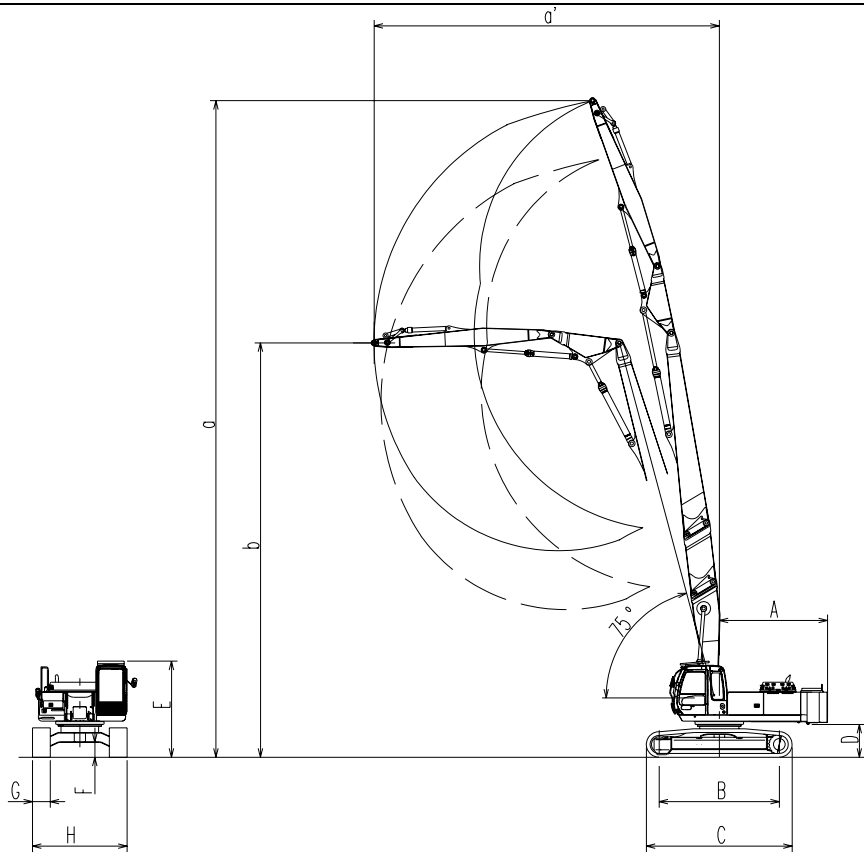
crusher weight
2 400 kg



HITACHI

TECHNICAL DATA

DIMENSIONS



Front end attachment	20 meter demolition front	22 meter Demolition front	Backhoe front
Max. Usable Crusher weight	2 400 kg	2 100 kg	2100 kg
Bucket capacity	-	-	1.15 m ³
Operating weight	40 100 kg	41 400 kg	34 640 kg
Average ground pressure	73 kPa (0.74 kgf/cm ²)	75 kPa (0.76 kgf/cm ²)	65 kPa (0.66 kgf/cm ²)
a Max. arm point height	20 000 mm	22 100 mm	
a' Max. arm point reach	11 400 mm	11 600 mm	
b Workin height	13 930 mm	←	
c Max. digging deptht	-	-	6 800 mm
d Max. digging height	-	-	12 180 mm
e Max. digging reach	-	-	11 820 mm
A Rear-end swing radius	3 650 mm	←	3 320 mm
B Distance between tumbler	4 050 mm	←	←
C Undercarriage length	4 940 mm	←	←
D Counterweight clearance	1 100 mm*	←	←
E Overall height of the cab	3 270 mm	←	←
F Min. ground clearance	500 mm*	←	←
G Track shoe width	G600 mm	←	←
H Undercarriage width	3 190 mm	←	←
I Overall width	3 190 mm	←	←

Triple Grouser shoe
 *: Excluding track shoe lug.

TECHNICAL DATA

ENGINE

Model..... Isuzu AA-6HK1X
Type..... 4-cycle water-cooled, direct injection
Aspiration Turbocharged, intercooled
No. of cylinders..... 6
Rated power
DIN6271, net P mode : 177 kW (240 HP) at 1 900 min⁻¹ (rpm)
SAE J1349, net P mode : 173 kW (237 HP) at 1 900 min⁻¹ (rpm)
Maximum torque..... 873 N·m (89 kgf·m) at 1 800 min⁻¹ (rpm)
Piston displacement 7 790 L
Bore and stroke 105 mm × 125 mm
Batteries 2 × 12 V / 97 AH
Governor Mechanical speed control with stepping motor

HYDRAULIC SYSTEM

- Work mode selector
Digging mode / Attachment mode
- Engine speed sensing system

Main pumps 2 variable displacement axial piston pumps
Max. oil flow 2 × 290 L/min.
Pilot pump 2 gear pumps
Max. oil flow 2 × 32 L/min.

HYDRAULIC MOTORS

Travel 2 variable displacement axial piston motors
Swing 1 axial piston motor

RELIEF VALVE SETTINGS

Implement circuit 31,4 Mpa (320 kgf/cm²)
Swing circuit 31,4 Mpa (320 kgf/cm²)
Travel circuit 34,3 Mpa (350 kgf/cm²)
Pilot circuit 3,9 Mpa (40 kgf/cm²)
Power boost 34,3 Mpa (350 kgf/cm²)

HYDRAULIC CYLINDERS

High-strength piston rods and tubes. Cylinder cushion mechanisms provided in boom and arm cylinders to absorb shock at stroke ends.

UPPER STRUCTURE

REVOLVING FRAME

Welded sturdy box construction, using heavy-gauge steel plates for ruggedness. D-section frame for resistance to deformation

SWING MECHANISM

Axial piston motor with planetary reduction gear is bathed in oil. Swing circle is single-row, shear-type ball bearing with induction hardened internal gear. Internal gear and pinion gear are immersed in lubricant. Swing parking brake is spring-set /hydraulic-released disc type.
Swing speed 11.8 min⁻¹ (rpm)

OPERATOR'S CABIN

Independent spacious cabin, 1 005 mm wide by 1 675 mm high, conforming to ISO standards. Reinforced glass windows on 4 sides for visibility. Front windows (upper and lower) can be opened. Reclining seat with armrests; adjustable with or without control levers.

CONTROLS

Pilots controls. Hitachi's original shockless valve and quick warm-up system built in the pilot circuit. Hydraulic warm-up control system for engine and hydraulic oil.

Implement levers 2
Travel levers with pedals 2

UNDERCARRIAGE

TRACKS

Tractor-type undercarriage. Welded track frame using selected materials. Side frame welded to track frame. Lubricated track rollers, idlers, and sprockets with floating seals.

Track shoes with triple grousers made of induction-hardened rolled alloy. Flat and triangular shoes are also available. Heat-treated connecting pins with dirt seals. Hydraulic (grease) track adjusters with shock-absorbing recoil springs.

NUMBERS OF ROLLERS AND SHOES ON EACH SIDE

Upper rollers 2
Lower rollers 9
Track shoes 48
Track guard 1

TRACTION DEVICE

Each track driven by 2-speed axial piston motor through planetary reduction gear for counterrotation of the tracks.

Sprockets are replaceable. Parking brake is spring-set/hydraulic-released disc type. Travel shockless relief valve built in travel motor absorbs shocks when stopping travel.

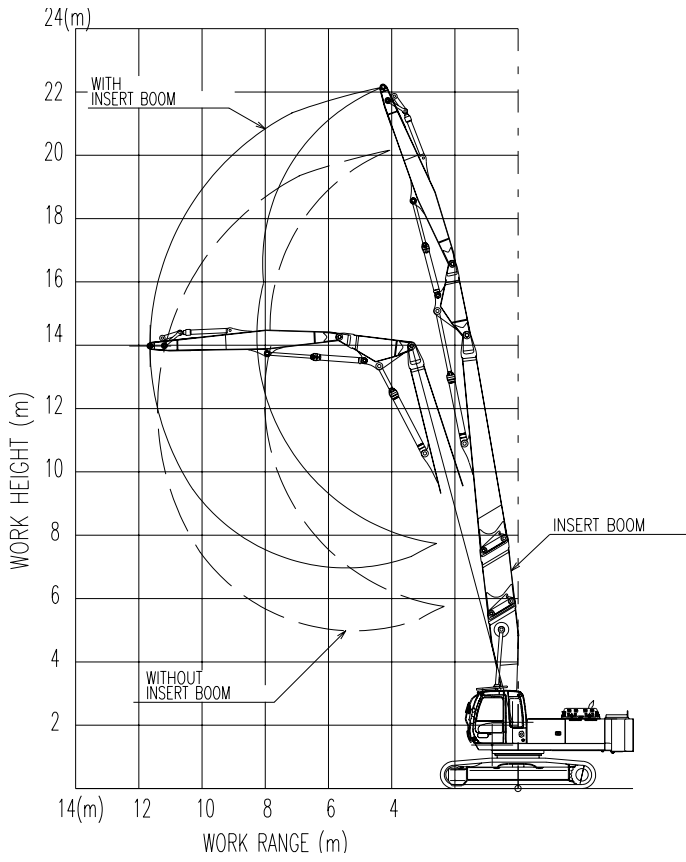
Automatic transmission system: High-Low

Travel speeds High: 0 to 5.5 km/h
Low: 0 to 3.8 km/h

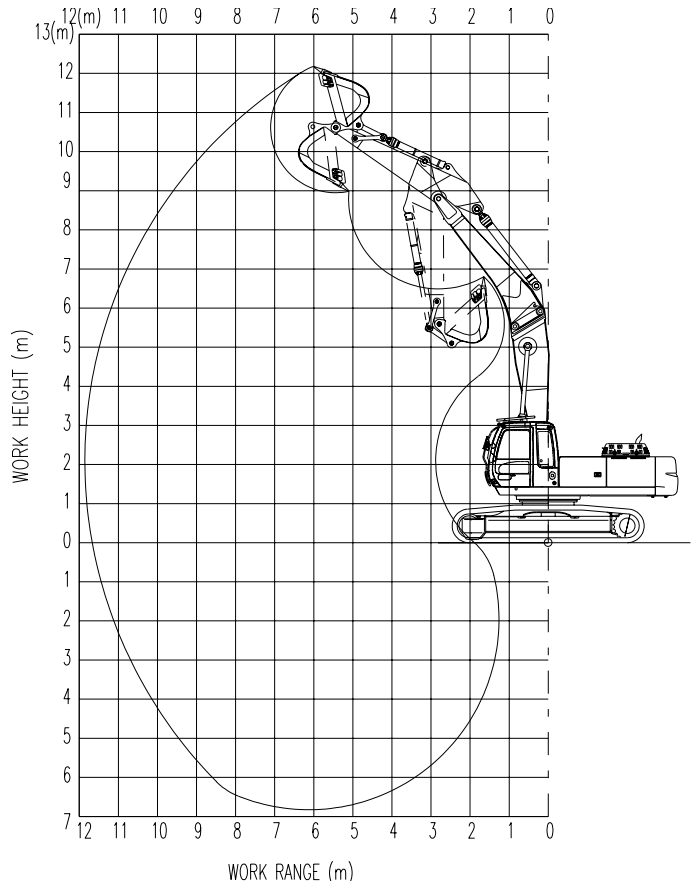
Maximum traction force 246 kN (25 100 kgf)
Gradeability 35° (70%) continuous

TECHNICAL DATA

WORKING RANGE DEMOLITION FRONT



WORKING RANGE BACKHOE FRONT

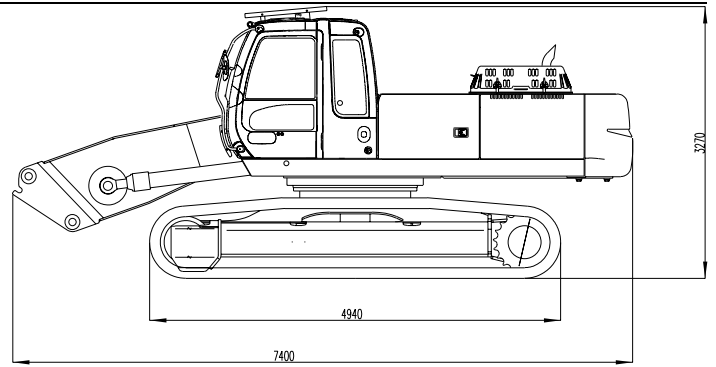


CAUTION: Operating the machine outside the specified work range is inhibited. Refer to the Operator's Manual for ZAXIS Series Hydraulic Excavator for the specifications other than described above.

TECHNICAL DATA

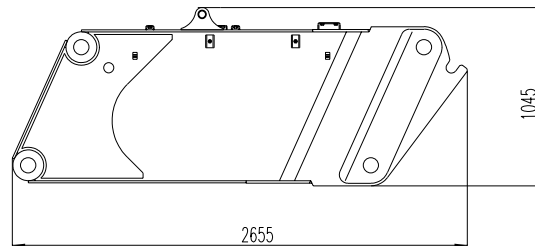
TRANSPORTING

Model	Shoe Width mm	Overall Width mm	Weight kg
ZX350LCK	600	3190	30 700



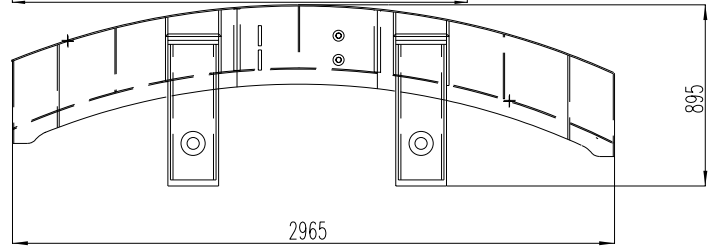
Insert Boom

Weight: 1110 kg
Height: 700 mm



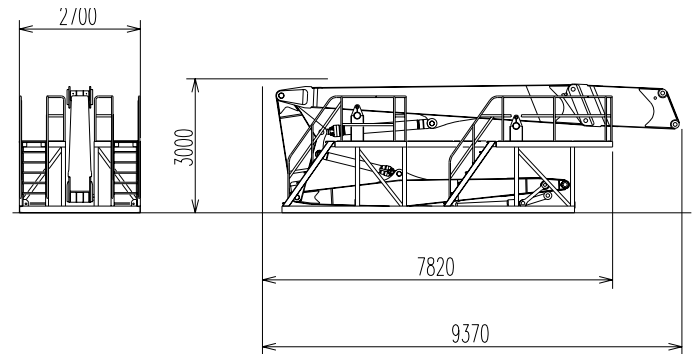
Additional Counterweight

Weight: 2700 kg
Width: 1290 mm



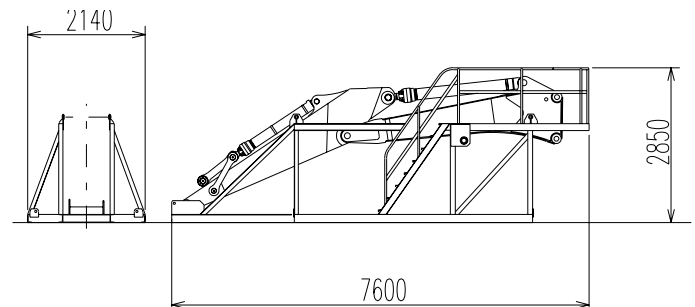
Storage Stand (with Demolition Front Attachment)

Weight: 6500 kg
Weight: 7600 kg (with Insert Boom)



Storage Stand (with Backhoe Front Attachment)

Weight: 5500 kg



HITACHI CONSTRUCTION MACHINERY (EUROPE) NV

Souvereinstraat 16, 4903 RH, Oosterhout
P.O. 404, 4900 AK Oosterhout
The Netherlands T +31 (0)162 484400, F +31 (0)162 457453
www.hcme.com

These specifications are subject to change without notice. Illustrations and photos show the standard models, and may or may not include optional equipment, accessories, and all standard equipment with some differences in color and features. Before use, go through Operator's Manual for proper operation.
© 2005 Hitachi Construction Machinery (Europe) NV