

products range

VX Series

▶▶ 0.9 | 2.5 Ton.



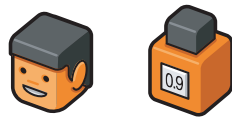
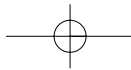
Models inside

9VX | 15NX | 20VX | 25VX



www.ihimer.com

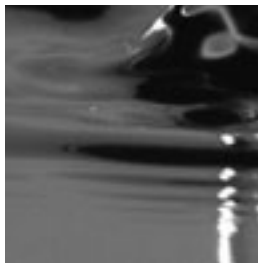




9VX

Micro excavator: where others cannot reach

The micro excavator 9VX, the new ultra-compact model, utilizes the technology of higher class machines. Power and speed of excavation are assured when working in confined spaces: in small restructuring work, in operations of excavation and maintenance of sewerage systems, in tunnels where larger machines cannot operate, but also in the gardening and nursery sector.



YANMAR 9.5HP DIESEL ENGINE

The YANMAR TNV series engine and the hydraulic circuit that uses two gear pumps assure a high operating speed and simultaneous movements.

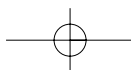
The engine with a low speed of rotation, enables the utmost efficiency with low consumption together with considerable productivity.

The exploitation index is reduced to improve durability and reliability over time.

PROTECTION FOR COMPONENTS

The hoses, protected by sheaths, are positioned centrally in order to reduce twisting to a minimum.

The hydraulic pipes of the undercarriage are covered by wraparound metal guards.





SLEWING ENGINE

Despite the machine's small size, the slewing engine is equipped with an automatic brake to lock the turret in any position.

TWO TRAVELLING SPEEDS

The two travelling speeds (1.7/3.5 km/h) enable efficient travelling and maximum manoeuvrability during operations on site along with fast driving. The pedal of the second speed is easy to use.

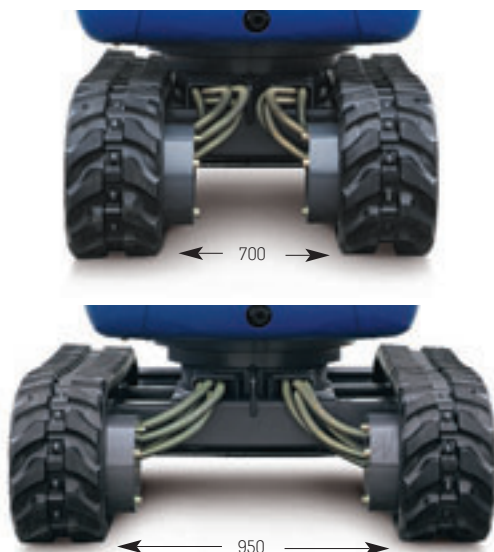
**SLEWING IN CLEARANCE:
TO ADAPT TO EVERY SITUATION**

Thanks to its extremely short rear turning radius of 485 mm, while slewing the chassis frame turns within the clearance of the tracks with the carriage extended and allows greater safety both for the machine and for the operator. If the carriage is closed access into confined spaces is facilitated. The auxiliary system version is available as an optional for the hydraulic breaker and other attachments.

COMPACT DIMENSION

Front turning radius with swing:
950 mm.
 Rear turning radius:
485 mm.

VARIABLE GAUGE UNDERCARRIAGE



VARIABLE GAUGE UNDERCARRIAGE

Thanks to its extensible frame (700 - 950 mm) the 9VX ensures high versatility. Access is permitted into really limited spaces and extending the carriage in very few seconds provides a high safety level and considerable operational stability.

A NEW DESIGN FOR THE UNDERCARRIAGE

The new design permits an increase in traction during work and greater durability.

ROLLERS

Rollers with a double, outer side, support reduce wear on the tracks, improve load distribution and increase operational stability.

BLADE

The two extensible sections of the blade are easily stored behind it when working with the narrow carriage. They do not have to be removed each time.

Specifications

9VX

Operating weight w/RS	965 kg
Standard bucket width/capacity	370 mm/0.022 m ³
Undercarriage width	700/950 mm
Rear turning radius	485 mm
Max. digging depth/with long arm	1570/1770 mm



COMFORT AND SAFETY

Designed around the operator, the driving position is comfortable thanks to the adjustable seat and ergonomic controls. The driving seat can be accessed from both sides. The 9VX is equipped with DCS Direct Control System controls that assure maximum precision. The control pedals of the auxiliary circuit and swing are separate. Both pedals can be folded back thereby increasing the space at the operator's feet. The control monitor is easy to read. A safety device checks access to the driving seat, if the lever is lifted it prevents movements of the boom. A front bar assures the operator a safe and protected driving seat; at the rear the machine is well protected by a cast bumper.



WORK OUTFIT

The remarkable geometry of the boom movement and the minimal distance between bucket and dozer blade enable performing excavation operations even close to the dozer blade.

The lifting cylinder is supported by a safety plate and all the feed pipes of the cylinders of the bucket and swing mechanism are well protected. The auxiliary hydraulic circuit with the system is combined for using many hydraulic attachments.

FULL ACCESSIBILITY

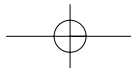
The fully opening engine bonnet provides an easy view of most of the engine and allows easy accessibility to the various components for operations of inspection and maintenance. The battery has reduced maintenance.

The resin tank has been designed to avoid damage from rust and the aluminium radiator ensures a greater exchange of heat and high resistance to corrosion.

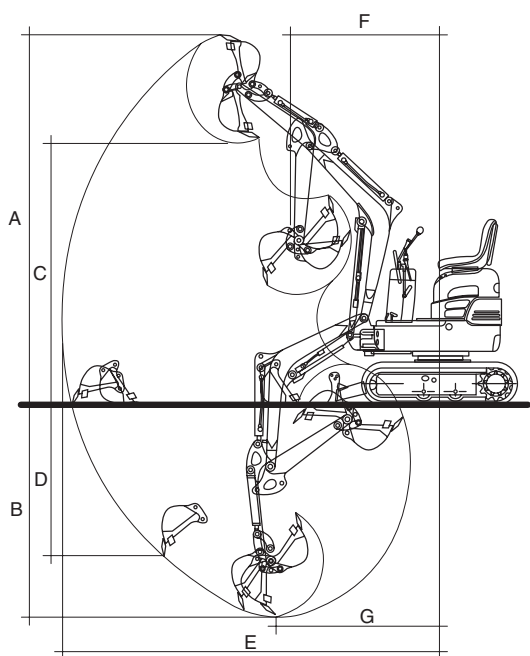
The high capacity air filter increases the length of time between maintenance.

EASIER MAINTENANCE

Easy maintenance even if the dimensions are ultra-compact.



Phot
in th
take
may
from
Spec
subj
with
tech
or m



Working range

9VX / 9VX*

A Maximum dumping height	2755 / 2950 mm
B Maximum digging depth	1570 / 1770 mm
C Maximum digging height	1970 / 2150 mm
D Maximum vertical digging depth	1175 / 1400 mm
E Maximum digging radius	2980 / 3190 mm
F Minimum front turning radius at right boom swing	1220 / 1320 mm 950 / 1030 mm
G Maximum digging depth radius	1330 / 1340 mm

* with long arm

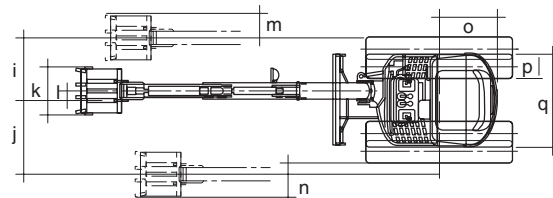
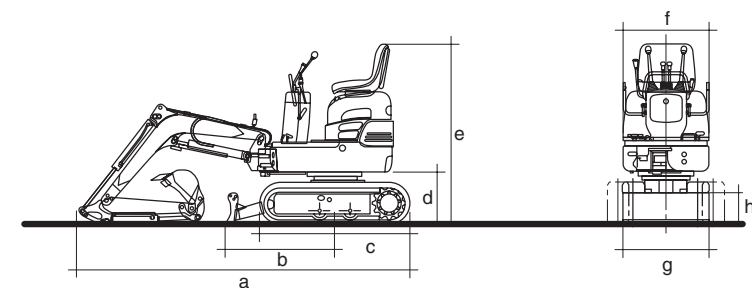
Optional

■ **Excavation and earthmoving equipment**

- Long arm (+200 mm)
- Blade extensions

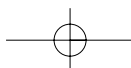
■ **Hydraulic circuits**

- Hydraulic circuit for breaker piping



Dimensions (mm)

	α	b	c	d	e	f	g	h	i	j	k	l	m	n	o	p	q
9VX	2700	890	1220	405	1405	720	700 (950)	240	470	570	370	70	180	280	485	180	700 (950)





Photographs appearing in the catalogue were taken for publication and may differ in some cases from actual objects. Specifications are subject to change without notice due to technical improvements or modifications.

9VX

General Specifications

STD. Bucket capacity (ISO)	0.022 m ³
STD. Bucket width	370 mm
Machine weight R.S.*	890 kg (no canopy)
Operating weight R.S.*	965 kg (no canopy)
Transport dimensions	720 x 2700 x 1405 mm
Gradeability	30°
Ground pressure R.S.*	26.2 kPa
Minimum ground clearance	160 mm
*R.S. Rubber Shoe	

Engine

The 2-cylinder Yanmar 2TNV70 diesel engine is water cooled.

Model	Yanmar 2TNV70
N° cylinders / displacement	2 / 570 cc
Bore x stroke	70 x 74 mm
Max output	13.4 HP @ 3600 rpm
Rated output (ISO 1585)	10 HP @ 2400 rpm (7.3 kW / 2400 min ⁻¹)
Fuel consumption	286 g/kW-h
Engine oil pan capacity	1.8 lt (Max level)

Electrical System

Voltage	12 V
Battery	12 V - 34 Ah
Alternator	12 V - 20 A
Starter motor	12 V - 1.0 kW

Hydraulic system

The hydraulic system composed of a sophisticated control valve with an open centre and gear pumps enables combined and precise work manoeuvres.

Maximum flow	11.1 lt/min x 2
Max Pressure / Setting	16.2 Mpa (165 kgf / cm ²)
Control	DCS control (Direct Control System)

Double action hydraulic circuit for accessories

Maximum flow	22.2 lt/min
Set pressure	16.2 Mpa (165 kgf / cm ²)

End-of-stroke cushioning

Boom cylinder	rod fully extended
---------------	--------------------

Slewing system

The turret orientation is assured by a hydraulic motor that operates a fifth wheel with remote greased internal toothing.

Swing speed	8.7 min ⁻¹
Turntable braking	automatic multi-disc brake
Absorption of hydraulic shocks	shock less valve

Bucket performance

Max. bucket digging force (ISO 6015)	10.6 kN (1090 kgf)
Max. arm digging force (ISO 6015)	6.2 kN (630 kgf)

Undercarriage

The extensible lower frame is composed of a welded and machined central body that supports the two sliding track frames.

The bearings of the rollers and of the tightener wheels are permanently lubricated.

Undercarriage length R.S.	1220 mm
Variable gauge	700 / 950 mm
Crawler shoe width	180 mm
Lower rollers	2
Track tension	tension spring and grease cylinder
Dozer blade size (Width x Height)	700 / 950 mm x 240 mm
Lift above ground	220 mm
Drop below ground	150 mm

Travel system

Each track is operated by a gearmotor composed of a two-speed axial piston engine and an epicyclic reduction gear.

Travel speed (1α / 2α)	1.7 / 3.5 km/h
------------------------	----------------

Capacity

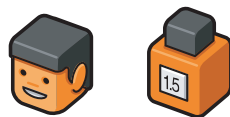
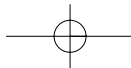
Fuel tank	8.5 lt
Hydraulic tank	8.2 lt
Engine oil	14 lt
Engine coolant	2.2 lt

Boom swing system

Right swing angle	90°
Left swing angle	50°

Other data

Noise level LwA (2000/14/EC)	91 dBA
------------------------------	--------



15NX

Mini excavator: where others cannot reach

The mini excavator 15VX, the new ultra-compact model, utilizes the technology of higher class machines. Power and speed of excavation are assured when working in confined spaces: in small restructuring work, in operations of excavation and maintenance of sewerage systems, in tunnels where larger machines cannot operate, but also in the gardening and nursery sector.



YANMAR 13HP DIESEL ENGINE

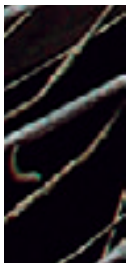
The 3-cylinder engine has a low speed of rotation and a reduced exploitation index to improve durability and reliability over time. The air filter with its high filtering capacity is composed of a double cartridge that reduces maintenance and increases the reliability of the engine. The fuel circuit is equipped with a diesel filter with a water separator, ensuring a long engine life. The high efficiency of the engine combined with an advanced hydraulic system ensures low fuel consumption and less noise and it limits polluting emissions according to the antipollution requirements of the 97/68/EU regulations.



REAR FRAME WITHIN CLEARANCE

While slewing, the chassis frame turns within the clearance of the tracks with the carriage extended, allowing greater safety for the machine and for the operator.

If the carriage is closed access into confined spaces is facilitated. It is available in the rubber track or iron track version, with a canopy with 4 pillars with TOPS-FOPS protection (conforming to EU safety regulations).



TWO TRAVELLING SPEEDS

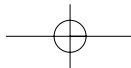
The two travelling speeds (2.1/4.0 km/h) enable moving quickly on site along with maximum manoeuvrability.

FULLY VERSATILE

The special geometry of the boom and the movement combined with the minimal distance between bucket and dozer blade enable excavating and loading materials of a large size even close to the dozer blade.

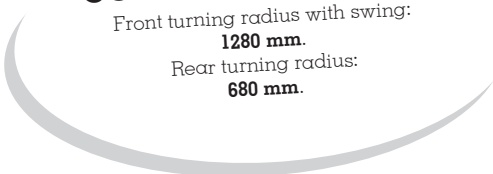
SAFETY

The canopy ensures a full view for the operator. The boom movements are softened by the Anti-Shock valve in the hydraulic circuit. In the phase of lifting the 1st boom the shock of stopping at the boom's limit stop is reduced by the cylinder shock-absorbing system. A similar system comes into action in the phase of fifth wheel rotation as well. The self braking motor prevents accidental movement when the operator is away. The pedals controlling the auxiliary circuit and swing are separate and strengthened with sturdy guards with the function of a footrest.



COMPACT DIMENSION

Front turning radius with swing:
1280 mm.
Rear turning radius:
680 mm.

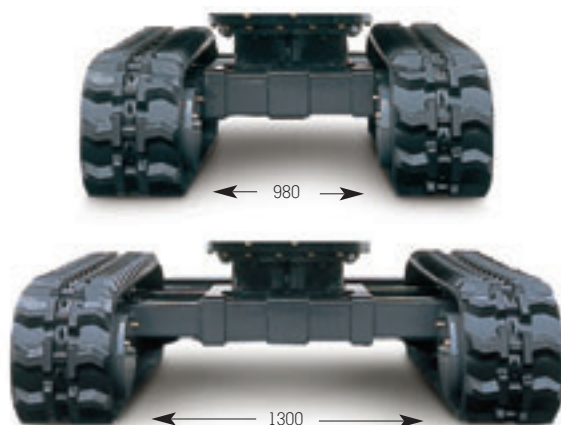


Specifications

15NX

Operating weight w/RS canopy	1695 kg
Standard bucket width/capacity	400 mm/0.044 m ³
Undercarriage width	980/1300 mm
Rear turning radius	680 mm
Max. digging depth canopy/with long arm	2100/2350 mm

VARIABLE GAUGE UNDERCARRIAGE



COMFORT AND SAFETY

The position is comfortable thanks to the adjustable spring seat, horizontal adjustment, tilting backrest and ergonomic layout of the controls. It is equipped as standard with servo-assisted joysticks that ensure the utmost precision. Two safety levers control access to the driving seat and, if lifted, inhibit all the machine working and travelling controls. The instrumentation console is rational and user-friendly. Behind the seat there is a document holder.



VARIABLE GAUGE UNDERCARRIAGE

Thanks to the extensible frame (980 - 1300 mm) the 15NX ensures considerable safety and operational stability during side excavation and lifting operations in confined spaces or on particularly uneven or steep ground. Sites with reduced manoeuvring spaces are no longer a problem.

OPERATING FLEXIBILITY

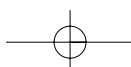
When the machine is working with the carriage closed, the two extensible sections of the blade are easily stored behind the blade itself. A lever via a function selector controls the movement of the blade or the expansion of the carriage.

SOLIDITY AND STABILITY

The long carriage (1570 mm) besides helping reduce the specific pressure on the ground also ensures great front stability even with the blade raised. The travelling unit is integrated in the width of the tracks.

HYDRAULIC CIRCUIT

It uses two variable displacement pumps and two gear pumps, ensuring constant balancing between operational speed and working forces. Precise and simultaneous manoeuvres are assured with no loss of power or drop in engine speed. The 15NX succeeds in moving forward while performing working operations without losing any linearity in the trajectory.





WORK OUTFIT

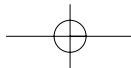
The auxiliary hydraulic circuit for using various hydraulic attachments is installed as standard up to the 2nd boom. The system uses a valve to return the oil directly to the hydraulic reservoir. A pedal locking device enables using manually controlled hydraulic equipment. As an optional there is a version with a long boom to increase the depth of excavation (max 2310 mm). The second speed push-button control is provided.

RELIABILITY OVER TIME

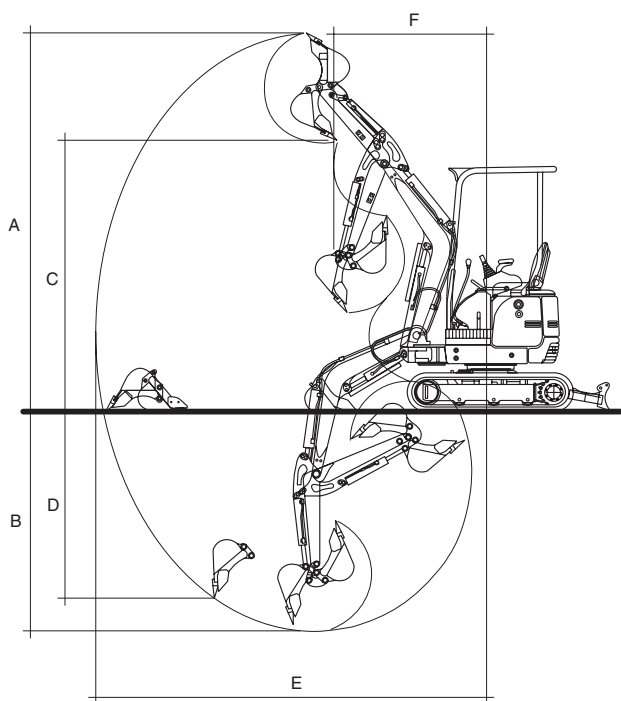
The hydraulic pipes of the undercarriage are covered by sheaths for protection against scratching. The cylinder feed pipes are all internal to minimize every kind of damage. The lifting cylinder is also fitted with a safety plate.

ACCESS AND EASY MAINTENANCE

The side opening engine bonnet provides easier access and visibility of most of the engine and allows easy accessibility to the various components for operations of daily inspection (oil-filters-belts) and maintenance. The battery requires reduced maintenance. Refuelling with diesel is done via handy and easy access with a lockable cap. Checking the operating pressures is facilitated by quick couplers on the pumps.



Phot
in th
take
may
from
Spec
subj
with
tech
or m



Working range

15NX / 15NX*

A Maximum dumping height	3610 / 3810 mm
B Maximum digging depth	2100 / 2350 mm
C Maximum digging height	2560 / 2760 mm
D Maximum vertical digging depth	1770 / 2010 mm
E Maximum digging radius	3760 / 3990 mm
F Minimum front turning radius at right boom swing	1490 / 1580 mm 1280 / 1340 mm

* with long arm

Optional

■ **Excavation and earthmoving equipment**

- Long arm (+250 mm)

■ **Frame**

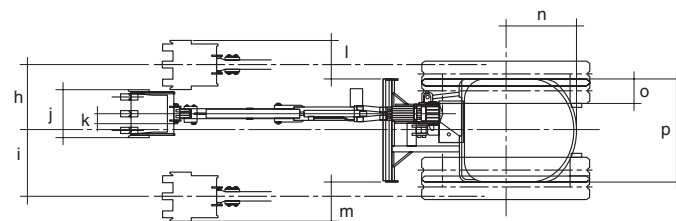
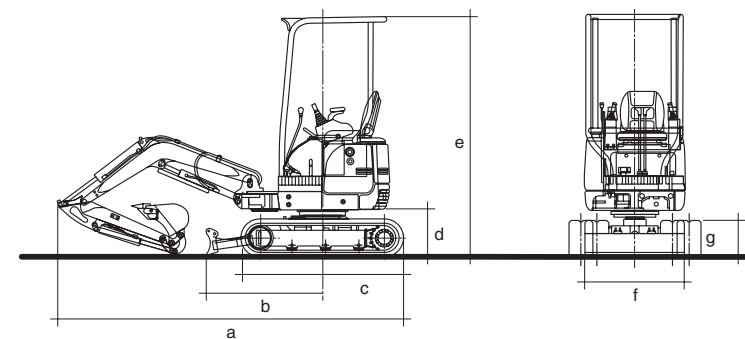
- Steel tracks width 230 mm

■ **Lighting**

- 2 additional front lights

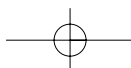
■ **Comfort and safety**

- Additional counterweight (100 kg)



Dimensions (mm)

	a	b	c	d	e	f	g	h	i	j	k	l	m	n	o	p
15NX	3380	1155	1570	460	2330	980(1300)	395	615	610	400	150	335	330	680	230	980(1300)





Photographs appearing in the catalogue were taken for publication and may differ in some cases from actual objects. Specifications are subject to change without notice due to technical improvements or modifications.

15NX

General Specifications

STD. Bucket capacity (ISO)	0.044 m ³
STD. Bucket width	400 mm
Machine weight R.S. / S.S.* Canopy	1600 / 1660 kg
Operating weight R.S. / S.S.* Canopy	1695 / 1755 kg
Transport dimensions	3380 x 980 x 2330 mm
Gradeability	30°
Ground pressure	26.5 / 28.5 kPa
Minimum ground clearance	175 mm

*R.S. / S.S. Rubber Shoe / Steel Shoe

Engine

The 3-cylinder Yanmar 3TNE68 Diesel engine is water cooled.

Model	Yanmar 3TNE68
N° cylinders / displacement	3 / 784 cc
Bore x stroke	68 x 72 mm
Max output	19.4 HP α 3600 rpm
Rated output (ISO 1585)	13 HP α 2300 rpm (9.7 kW / 2300 min ⁻¹)
Fuel consumption	272 g/kW-h
Engine oil pan capacity	3 lt (Max level)

Electrical System

Voltage	12 V
Battery	12 V - 45 Ah
Alternator	12 V - 20 A
Starter motor	12 V - 0.9 kW

Hydraulic system

The particularly sophisticated hydraulic system integrated with variable displacement pumps and servo-assisted controls ensures extraordinary manoeuvrability and precision of the movements even when travelling, always maintaining forward movement in a straight line.

Maximum flow	17.2 lt/min x 2 + 12 lt/min
Max Pressure / Setting	20.6 Mpa (210 kgf / cm ²)
Control	hydraulic remote control

Double action hydraulic circuit for accessories

Maximum flow	29.2 lt/min
Set pressure	20.6 Mpa (210 kgf / cm ²)

End-of-stroke cushioning

Boom cylinder	rod fully extended
---------------	--------------------

Slewing system

The turret orientation is assured by a hydraulic motor that operates a fifth wheel with remote greased internal toothing.

Swing speed	9.4 min ⁻¹
Turntable braking	automatic multi-disc brake
Absorption of hydraulic shocks	shock less valve

Bucket performance

Max. bucket digging force (ISO 6015)	15.7 kN (1600 kgf)
Max. arm digging force (ISO 6015)	9.35 kN (950 kgf)

Undercarriage

The extensible lower frame is composed of a welded and machined central body that supports.

The two sliding track frames. The bearings of the rollers and of the tightener wheels are permanently lubricated.

Undercarriage length R.S. / S.S.	1570 / 1550 mm
Variable gauge	980 / 1300 mm
Crawler shoe width	230 mm
Lower rollers	3
Track tension	tension spring and grease cylinder
Dozer blade size (Width x Height)	980 / 1300 mm x 235 mm
Lift above ground	230 mm
Drop below ground	340 mm

Travel system

Each track is operated by a gearmotor composed of a two-speed axial piston engine and an epicyclic reduction gear.

Travel speed (1α / 2α)	2.1 / 4.0 km/h
------------------------	----------------

Capacity

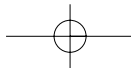
Fuel tank	20 lt
Hydraulic tank	19 lt
Engine oil	23 lt
Engine coolant	3.6 lt

Boom swing system

Right swing angle	80°
Left swing angle	55°

Other data

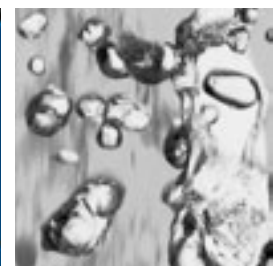
Noise level LwA (2000/14/EC)	92 dBA
------------------------------	--------



20VX | 25VX

Mini excavators: operating in confined spaces

Thanks to the rear frame that turns inside the track gauge, it is possible to perform digging and loading operations in total safety near to walls or in places where there is little room available. The speed of rotation of 10 rpm enables higher performance during work.



COMPACT DIMENSIONS

Front turning radius with swing: 1870 mm for the 20 VX and 1940 mm for the 25VX. Rear turning radius: 750 mm for the 20VX and 775 mm for the 25VX. Width of the 20VX reduced to 1500 mm of the 25VX to 1550 mm, two ideal machines to work in confined spaces, the operations of digging flush with a wall can be performed extremely easily.

LESS MAINTENANCE AND LONGER LIFE

On the 20VX and 25VX the large pins and new bushings permit long greasing intervals together with a longer life.

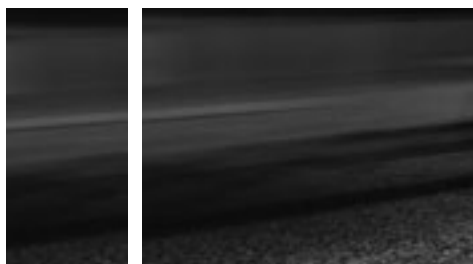
ENGINE

- 20VX Yanmar 3TNV76 17.6 HP engine.
- 25VX Yanmar 3TNV76 18.4 HP engine.

The Yanmar engine and the high-efficiency hydraulic circuit ensure minimal noise, very low fuel consumption and pollution emissions reduced to the minimum. The engine has a low speed of rotation with no vibration at all. The new TNV series complies with current regulations on pollution emissions.

HYDRAULIC SYSTEM

Thanks to careful sizing of the hydraulic system, breakout force on the bucket tooth reaches 19.6 kN (2000 kgf) on both models.



ANTIDRIFT VALVE
The particularly sophisticated control valve is equipped on the boom circuit with an "Antidrft" valve that prevents the boom lowering into the rest position.



PROTECTION FOR COMPONENTS
The hydraulic pipes are routed on the top of the boom and inside the arm with the piping protected with a metal coil and burst-proof sheaths.

BLADE AND BOOM CYLINDER PROTECTION

For easier maintenance, the pipes of the cylinder, bucket and boom are modular with external connections.



AUXILIARY HYDRAULIC CIRCUIT
The auxiliary hydraulic circuit uses a two-way valve for hydraulic attachments such as a hydraulic breaker, shears, hydraulic grippers, drills. The 20VX and 25VX are equipped as standard with hydraulic fittings for the breaker up to the second boom.



RECYCLABLE MATERIALS
All the materials used for making the 20VX and 25VX, steel, cast-iron and plastic plates, are 97% recyclable.



COMPACT DIMENSION

Front turning radius:
1870 mm (20VX) and 1940 mm (25VX).
 Rear turning radius:
750 mm (20VX) and 775 mm (25VX).

VERSIONS AVAILABLE: CANOPY AND CAB

Both models are available both with a canopy with 4 pillars and with a cab, both TOPS certified against tipping over and ROPS against rolling over.

The spacious cab provides high operator comfort: plenty of space inside, large windows, removable windscreen with opening easily located under the roof, side window that slides open and an effective heating system. Great working visibility is ensured as the structure produces no blind corners. The working position is made even more comfortable thanks to the ergonomic layout of the controls, the adjustable spring seat and excellent soundproofing.

Specifications

	20VX	25VX
Canopy / Cab operating weight w/RS	2085 / 2145 kg	2655 / 2765 kg
Standard bucket width	480 mm	530 mm
Undercarriage width	1500 mm	1550 mm
Rear turning radius	750 mm	775 mm
Max. digging depth canopy/with long arm	2250 / 2550 mm	2520 / 2820 mm

COMFORT AND SAFETY

The pedals controlling the auxiliary circuit and swing are separate and equipped with sturdy guards with the function of a footrest. An additional pedal controls the speed change. The offset position of the driving seat in relation to the fifth wheel increases the operator's vision over the excavation. The driving position is very comfortable thanks to the adjustable seat with suspension, spring adjustment according to weight, horizontal adjustment according to driver height, and even the backrest is adjustable. The servo-assisted joystick controls ensure the utmost precision during all operations. Ergonomic layout of controls, heating, ventilation, cab courtesy light.



UNDERCARRIAGE

The design of the track frame helps expel debris and earth, making cleaning easier and reducing the accumulation of dirt.

EXCEPTIONAL STABILITY

The undercarriage 1810 mm long on the 20VX and 1895 mm on the 25VX considerably increases front stability and ensures reduced ground pressure, less damage to the ground and minimal track wear. The four supporting rollers on each side together with the track structure ensure excellent side stability.



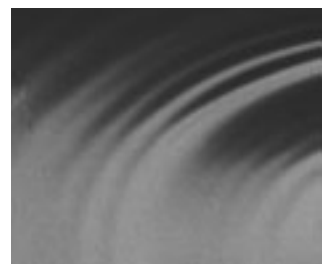
EXCELLENT WEIGHT DISTRIBUTION

The large undercarriage and perfect weight distribution ensure impressive stability, which is often greater than conventional machines of the same category. The machine is stable even in particularly critical situations or on muddy ground. The large blade cylinder is well protected against impact and damage.



POWER AND PRODUCTION: HYDRAULIC SYSTEM

The Power Shift hydraulic circuit control system, with two variable displacement pumps and one gear pump, delivers maximum power, extremely easy handling and precise movements. The servo-assisted piloting circuit is supplied by a separate gear pump.



FULL ACCESSIBILITY

Large bonnets provide access to the engine and to the hydraulic pumps, filters and radiator for inspection and maintenance. All the maintenance points are concentrated under the side bonnet such as the level and filling of the hydraulic oil, radiator fluid, fuel and battery check. Both models are equipped with an additional radiator for cooling the hydraulic oil, so as to prevent overheating due to continuous work. They are equipped with a bleed valve and water sedimentation filter.

HIGH CAPACITY TANK

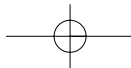
The tank with a capacity of as much as 35 litres on both models ensures greater operating autonomy and an increase in productivity.

SAFE ACCESS TO THE MACHINE

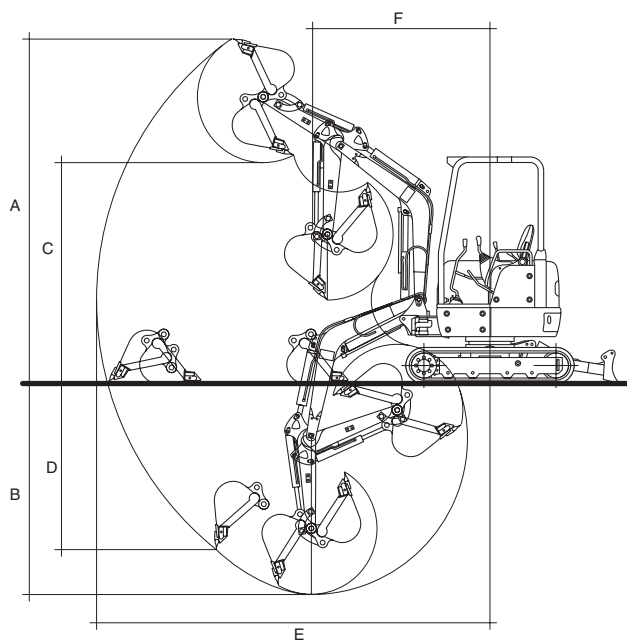
Both versions provide easy access to the driving seat also thanks to the handles.

SWING MOTORS

Both models are equipped with a rotation swing motor with a multiple disc brake and shock-absorbing valves for progressive starting and stopping without any recoil. The awkward mechanical pin blocking rotation has therefore been eliminated.



Phot
in th
take
may
from
Spec
subj
with
tech
or m



Working range

20VX / 20VX*

25VX / 25VX*

A Maximum dumping height	3670 / 3740 mm	4050 / 4280 mm
B Maximum digging depth	2250 / 2550 mm	2520 / 2820 mm
C Maximum digging height	2370 / 2460 mm	2750 / 2970 mm
D Maximum vertical digging depth	1750 / 1980 mm	1950 / 2220 mm
E Maximum digging radius	4200 / 4420 mm	4500 / 4750 mm
F Minimum front turning radius at right boom swing	1870 / 2000 mm 1540 / 1640 mm	1940 / 2040 mm 1510 / 1600 mm

* with long arm

Optional

■ **Excavation and earthmoving equipment**

- Long arm (+300 mm)

■ **Frame**

- Steel tracks

■ **Cabin version**

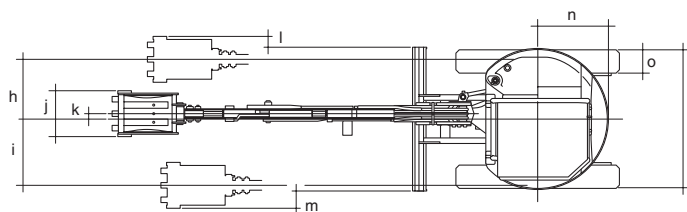
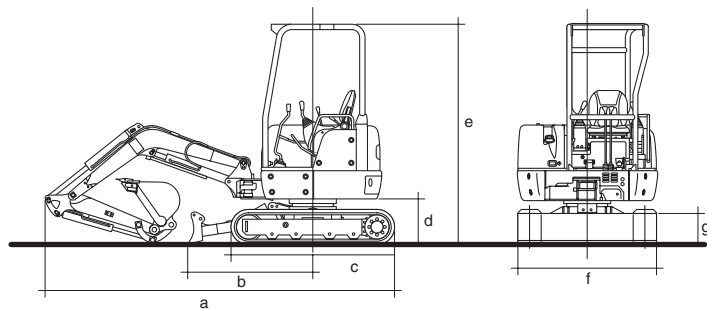
- Rops-Tops Cabin

■ **Lighting**

- 2 additional front lights, 1 additional rear light on top of cabin

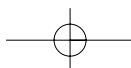
■ **Comfort and safety**

- Electrical antitheft system



Dimensions (mm)

	a	b	c	d	e	f	g	h	i	j	k	l	m	n	o	p
20VX	3810	1360	1810	500	2410	1500	350	650	700	490	50	125	175	750	250	1500
25VX	3940	1470	1895	560	2460	1550	365	560	700	530	50	35	175	775	300	1550





Photographs appearing in the catalogue were taken for publication and may differ in some cases from actual objects. Specifications are subject to change without notice due to technical improvements or modifications.

20VX

25VX

General Specifications

STD. Bucket capacity (ISO)	0.07 m ³	0.08 m ³
STD. Bucket width	480 mm	530 mm
Machine weight R.S. / S.S.* Canopy	2010 / 2110 kg	2580 / 2680 kg
Machine weight R.S. / S.S.* Cabin	2070 / 2170 kg	2690 / 2790 kg
Operating weight R.S. / S.S.* Canopy	2085 / 2185 kg	2655 / 2755 kg
Operating weight R.S. / S.S.* Cabin	2145 / 2245 kg	2765 / 2865 kg
Transport dimensions	3810 x 1500 x 2420 mm	3940 x 1550 x 2480 mm
Gradeability	30°	30°
Ground pressure (Cabin)	28.0 / 28.0 kPa	28.0 / 28.0 kPa
Ground pressure (Canopy)	26.0 / 27.0 kPa	27.0 / 28.0 kPa
Minimum ground clearance	280 / 280 mm	300 / 310 mm

*Rubber Shoe / Steel Shoe

Engine

Model	Yanmar 3TNV76	Yanmar 3TNV76
N° cylinders / displacement	3 / 1115 cc direct injection	3 / 1115 cc direct injection
Bore x stroke	76 x 82 mm	76 x 82 mm
Max output	25 HP α 3200 rpm (18.6 kW / 3200 min ⁻¹)	25 HP α 3200 rpm (18.6 kW / 3200 min ⁻¹)
Rated output (ISO 1585)	17.6 HP α 2200 rpm (13 kW / 2200 min ⁻¹)	18.4 HP α 2300 rpm (13.5 kW / 2300 min ⁻¹)
Fuel consumption	279 g/kW-h	279 g/kW-h
Engine oil pan capacity	3.4 lt (Max level)	3.4 lt (Max level)

Electrical System

Voltage	12 V	12 V
Battery	12 V - 55 Ah	12 V - 55 Ah
Alternator	12 V - 40 A	12 V - 40 A
Starter motor	12 V - 1.1 kW	12 V - 1.1 kW

Hydraulic system

The Power Shift hydraulic circuit control system, with two variable displacement pumps and one gear pump, delivers maximum power, extremely easy handling and precise movements. The remote control circuit is supplied by another, autonomous gear pump.

Maximum flow	24.6 lt/min x 2 + 17.6 lt/min	29.9 lt/min x 2 + 19.8 lt/min
Max Pressure / Setting	20.6 Mpa (210 kgf / cm ²) / 18.1 Mpa (185 kgf / cm ²)	20.6 Mpa (210 kgf / cm ²) / 18.1 Mpa (185 kgf / cm ²)
Control	Hydraulic remote control	Hydraulic remote control

Double action hydraulic circuit for accessories

Maximum flow	40.6 lt/min	48 lt/min
Set pressure	20.6 Mpa (210 kgf / cm ²)	20.6 Mpa (210 kgf / cm ²)

End-of-stroke cushioning

Boom cylinder	rod fully extended	rod fully extended
Arm cylinder	rod fully retracted	rod fully retracted
Swing cylinder	rod fully retracted and fully extended	rod fully retracted and fully extended

Slewing system

The swing system is assured with a hydraulic axial piston motor coupled to an epicyclic gearing drive reduction unit joint to a gear swing bearing. Full rotation parking brake equipped a swing motor.

The brake engages automatically when the safety lever is raised or the engine is turned off.

Swing speed	10 min ⁻¹	10 min ⁻¹
Turntable braking	automatic multi-disc brake	automatic multi-disc brake
Absorption of hydraulic shocks	shock less valve	shock less valve

Bucket performance

Max. bucket digging force (ISO 6015)	19.6 kN (2000 kgf)	19.6 kN (2000 kgf)
Max. arm digging force (ISO 6015)	11.8 kN (1200 kgf)	13.2 kN (1350 kgf)

Undercarriage

The lower frame is formed with two strong crawler frame joint to a welded and machined middle frame.

Undercarriage length R.S. / S.S.	1810 / 1800 mm	1895 / 1920 mm
Crawler shoe width	250 mm	300 mm
Lower rollers	4 / 1	3 / 1
Track tension	tension spring and grease cylinder	tension spring and grease cylinder
Dozer blade size (Width x Height)	1500 mm x 350 mm	1550 mm x 365 mm
Lift above ground	340 mm	370 mm
Drop below ground	370 mm	390 mm

Travel system

Each track is driven by a two speed hydraulic axial piston motor coupled to an epicyclic gearing drive reduction unit.

Travel speed (1α / 2α)	2.3 / 4.5 km/h	2.3 / 4.5 km/h
------------------------	----------------	----------------

Capacity

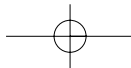
Fuel tank	35 lt	35 lt
Hydraulic tank	30 lt	30 lt
Engine oil	41 lt	41 lt
Engine coolant	4.0 lt	4.0 lt

Boom swing system

Right swing angle	80°	90°
Left swing angle	60°	60°

Other data

Noise level LwA (2000/14/EC)	93 dBA	93 dBA
------------------------------	--------	--------



distributed by



IHIMER Spa
53037 San Gimignano - Loc. Cusona (SI) - Italy
Phone: +39 0577 951 21
Fax: +39 0577 982 400
info@ihimer.com | www.ihimer.com

